



EQUIPMENT PRE-SITE ACCEPTANCE CHECKLIST

Company:			
Date:		Description:	
Registration Expiry:		Make:	
Kms/Hrs. of last service:		Rego. / Plant No:	
Next service due at:		Current km's/hrs:	

R = Required O = Optional N/A = Not Applicable

Note: Mobile Plant is plant that requires a 'ticketed' operator or an operator working under a log book supervised by a 'ticketed' operator or an operator holding a specific class of Driver's License i.e. LR and above or a light vehicle with extras such as a tipper or crane.

Note: This Checklist is not to be used for Cranes and Concrete Placing Boom Pumps - A separate Checklist Must be Complete RMS CHK-200-028 Crane Pre-site Checklist / RMS CHK-200-031 Concrete Placing Boom Pump Pre-site Checklist

Safety Equipment Minimum Requirements	Mobile Plant	Vehicles	Complies	Comments
Is the equipment registered	R	R		
Seat Belts Fitted	R	R		
Fire Extinguisher Fitted	R	O		
Flashing Light Fitted (Working correctly)	R	R		
Radio, site specific (if not required = N/A)	R	R		
First Aid Kit - Motorist type minimum	O	O		
Horn (Functioning correctly)	R	R		
Reversing Alarm (according to State legislation)	R	O / R		
Mirrors (In place and serviceable)	R	R		
Quick Hitches have Locking Pin Capability	R	N/A		
Articulated Plant Locking Points / Pins	R	N/A		
Safety Warning Signs Legible	R	N/A		
Tyres, Adequate Tread, and Inflation	R	R		
SWMS Provided - if not is the plant working under an existing SWMS (add title of SWMS in comments section)	R	N/A		
Plant Risk Assessment provided (from supplier and has to be specific to the plant)	R	R		
OEM Instruction Manual located with the equipment	R	O		
Does equipment have ROPS? <i>Risk assessment required if not on equipment, refer to RMS PR-200-020 Maintenance Management Procedure</i>	R	O		
Does the task require FOPS? Justification required for not having FOPS (additional controls required to mitigate the risk)	O	NR		
Maintenance Logbook & Prestart Inspection logbook are within the Cab of equipment	R	O / R		RMS Fleet office can be utilised (electronic copy of prestart and maintenance logs)
Attachments in good condition	R	N/A		
Lifting points are free from damage and defects and within tolerance levels - 10% wear (where applicable)	R	N/A		
Clean, free of weeds prior to arrival	R	R		



EQUIPMENT PRE-SITE ACCEPTANCE CHECKLIST

*Note: This Checklist is not to be used for Cranes and Concrete Placing Boom Pumps - A separate Checklist Must be Complete
RMS CHK-200-028 Crane Pre-Site Checklist / RMS CHK-200-031 Concrete Placing Boom Pump Pre-Site Checklist*

Inspected By:		Sign:		Date:	
----------------------	--	--------------	--	--------------	--

GUIDELINES TO ASSIST RMS STAFF

These guidelines describe the processes to be implemented at all RMS sites in order to ensure that all plant (including hired in mobile plant and mobile plant used by subcontractors) is both fit for use and used appropriately.

Mobile Plant

Can be referred to as track or wheeled plant such as excavators, graders, scrapers, dozers etc.

Vehicles include:

A vehicle includes, cars, utes, and 4 WD type vehicles, a rigid truck or Bus, prime movers, trailers, semi-trailers.

Responsibility

The respective Project Managers are responsible for ensuring that all mobile plant and vehicles operating within their sites are in a safe and serviceable condition.

Pre-site Acceptance Inspection

A pre-site acceptance inspection shall be conducted by RMS personnel on the mobile plant or vehicles prior to it being permitted to be operated on site. This can be noted in the Pre-site flowchart.

Mobile Plant & Vehicles

Once the mobile plant and vehicle pre-acceptance process has been satisfactorily completed, the mobile plant shall be registered onto the site Plant Register.

Delivery Vehicles / Short Term Subcontractors / Service Providers

Drivers of delivery vehicles and short-term contractors or service providers must be escorted, or directed, on the worksite by a RMS or other authorised representative.

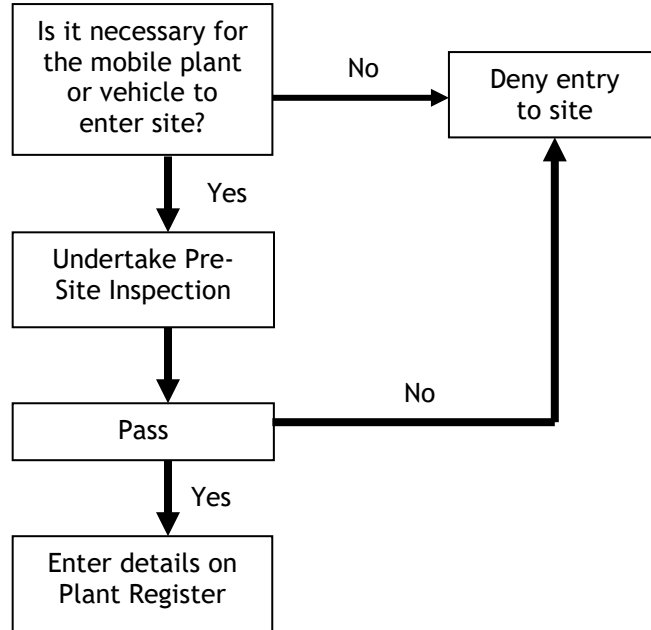
Daily Pre-Start Checks

It is RMS requirement that all operators and drivers undertake a daily inspection of the condition of mobile plant and vehicles respectively. Plant operators shall check the condition of mobile plant using the Time sheet & Pre-Start Inspection at the commencement of each shift.



EQUIPMENT PRE-SITE ACCEPTANCE CHECKLIST

Pre-Site Acceptance Flowchart





RMS ENGINEERING & CONSTRUCTION PTY LTD

PRE-SITE ACCEPTANCE CHECKLIST